

SAYA SYSTEM TAVATAV

Line Card

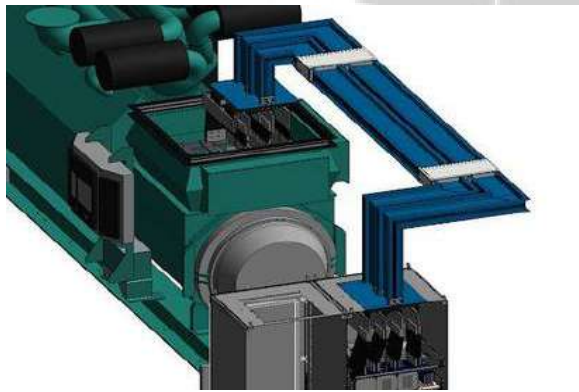


About Saya System

With years of experience and expertise, we are committed to delivering innovative, fast, and reliable solutions. We are excited to announce that SAYA SYSTEM TAVATAV Inc. is now official distributor of LS Electric and LS cable & System in Canada. LS is renowned for its advanced electrical equipment and automation solution which are designed to enhance energy efficiency, safety and operational reliability. By incorporating LS cutting-edge technology, we are able to offer comprehensive solutions that meet the highest standards of performance and sustainability.

Our Mission and Vision

Through thorough research and strategic planning, we established SAYA SYSTEM TAVATAV with a focus on:



Innovation

Continually advancing our technology to meet the needs of the electrical industry



Speed

Providing quick and efficient solutions for all our clients



Safety

Ensuring all our systems are designed with the highest safety standards



LS BUSWAY



LS ELECTRIC

LS BUSWAY

LS ELECTRIC



Global Network

More than 60 Factories, Sales and Production Sites in 20 Countries

- BRANCH
- SUBSIDIARIES
- R&D CENTER



- LS Cable & System
- LS Electric
- LS MnM
- LS Mtron
- E1
- Yesco
- Gaon Cable



- LG Electronics
- LG Chemical
- LG Display
- LG Telecom



- GS Caltex
- GS Engineering & Construction
- GS Retail
- GS Homeshopping



Global products.

Manufactured for today.

LS Group is a conglomerate based in South Korea. It spun off from LG Group in 2003.

LS Cable & System, headquartered in Anyang, South Korea, was established in May 1962 and is a worldwide leader in the design and manufacture of busways for a wide array of applications. With 21 subsidiary companies throughout the world, LS has more than 60 factories, sales, and production sites in 20 countries.

LS Electric was founded in 1974 with headquarters located in Anyang-Si and smart factory in Cheongju-Si leading electrical equipment production with over 4000 employees serving 5 continents.

The introduction of LS ELECTRIC to US market was initiated in 2022.

Having the biggest manufacturing capacity in Asia for UL certified power systems, LS ELECTRIC successfully delivered thousands of products including transformer, switchgear, switchboard and panel board toward hi-tech industrial plants of EV/ Battery, Renewable and Semiconductor.

Ex-way (UL)

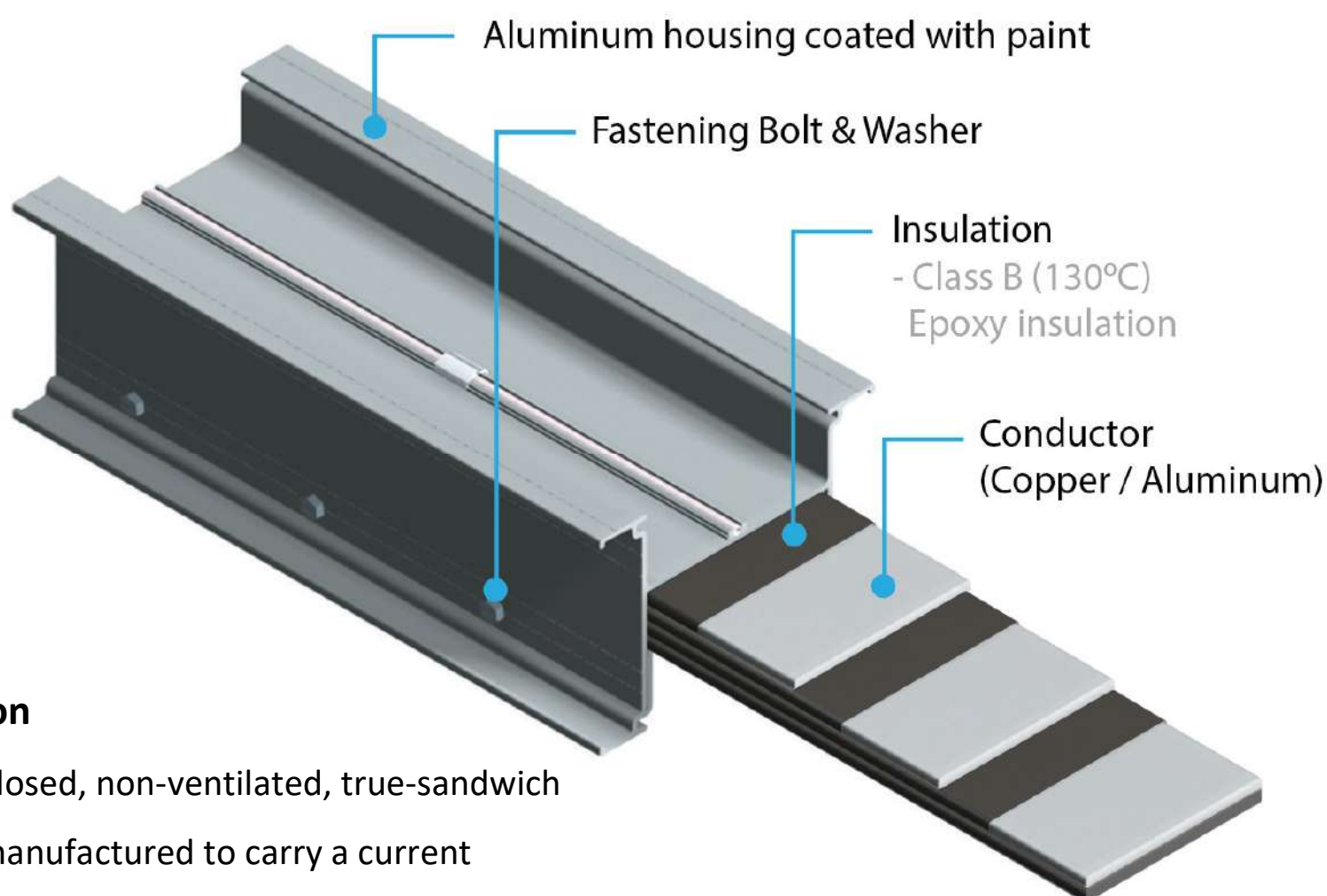
LS Cable & System Ex-way (UL)

Busway provides a wide range of options, including conductors, material and housing design with a wide range of voltage under 600V and current between 630A and 6000A. Ex-way (UL) can be customized to satisfy the needs of every client and every project



Applications

- Electrical rooms
- Apartments & large buildings
- Plants



EX-way (UL) Specification

Ex-way (UL) is a totally-enclosed, non-ventilated, true-sandwich design rated at 600V and manufactured to carry a current between 630A and 6000A.

Ex-way (UL) is available with either copper or aluminum conductor. The all-aluminum, two-piece housing provides excellent mechanical strength and heat diffusion properties.

Benefits

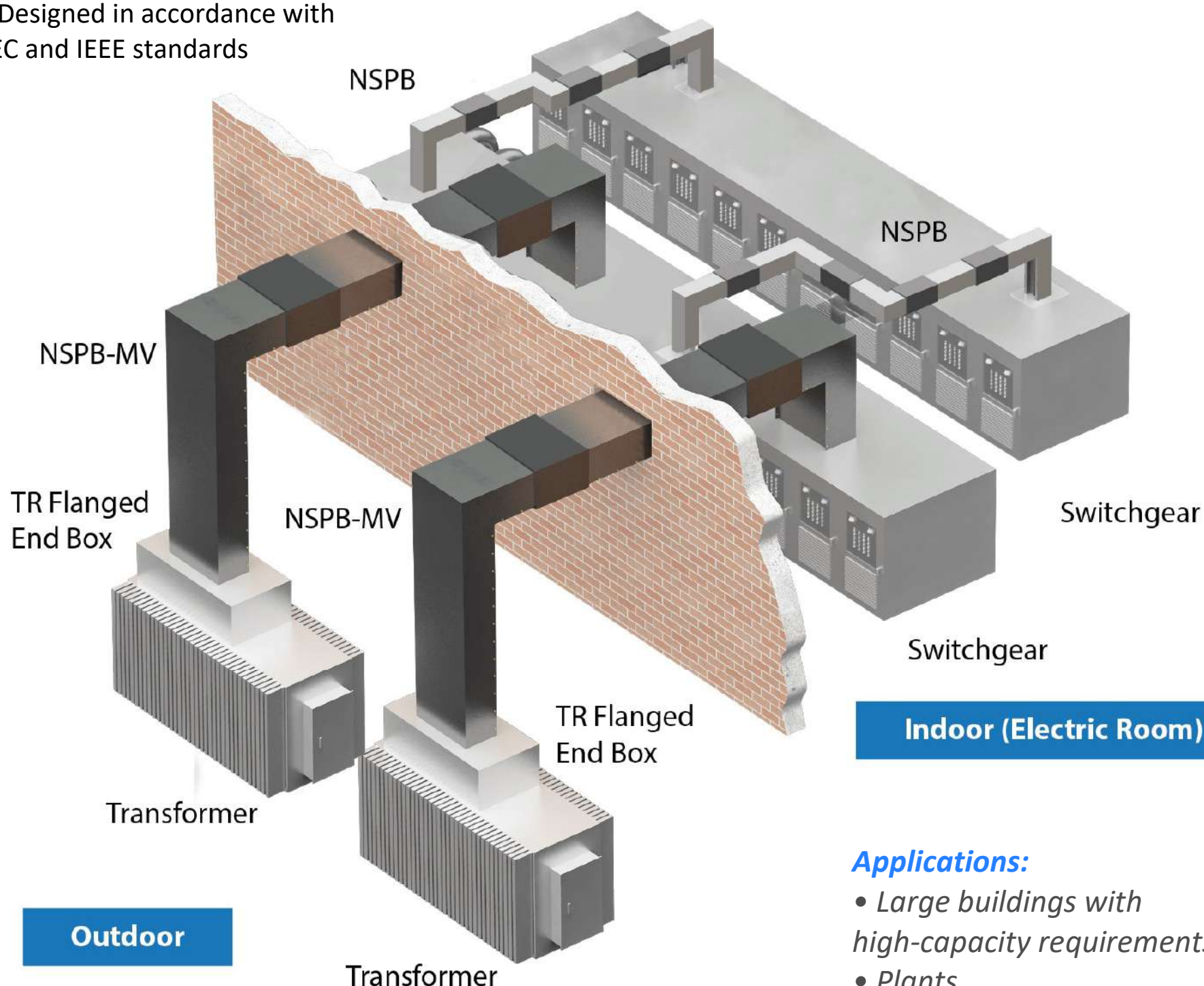
- Lightweight, easy to install and compact
- High thermo-diffusional efficiency
- Compatible with temperature- and power-monitoring systems and plug-in boxes
- Earthquake and explosion-resistance features

NSPB MV

LS Cable & System NSPB Busway provides a wide range of options, including conductors, material and housing design with a wide range of voltage under 27kV and current between 800A and 4000A. NSPB can be customized to satisfy the needs of every client and every project.

Benefits

- Environmentally friendly while retaining excellent performance
- RoHS certified; free of hazardous substances
- High short-circuit strength
- Designed in accordance with IEC and IEEE standards



Applications:

- Large buildings with high-capacity requirements
- Plants
- MV electrical substations

CR-way

LS Cable & System offers CR-way Busway for when you need total protection from the elements.

CR-way's epoxy resin housing fully encloses the product, offering additional insulation and protection. CR-way is available up to 27kV and is rated IP68. It is suitable for current capacities between 630A to 7500A (High voltage product 120~5000A).

Choose from either copper or aluminum conductor, and



Benefits

- Completely enclosed by a strong epoxy resin for maximum protection, stability and durability
- Safe for use near inflammable steam and gas, dusty environments, and other potentially explosive hazards
- Certified IP68, which means the product offers exceptional protection from intrusive water, fine particulates, erosion and corrosion
- Designed to prevent flames from spreading and includes fire resistance efficiency as a standard feature
- RoHS Certified; free of hazardous substances



MCCB / Fuse Box

LS Busway is easy to use with a variety of plug-in units.

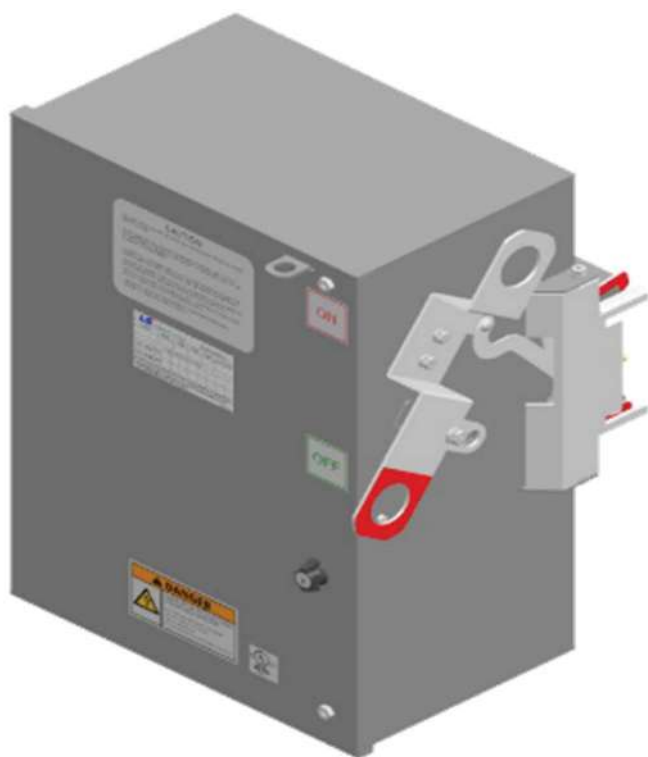
MCCB, a circuit breaker and trip device, can be used in conjunction with LS Busway to manually open and close the electric circuit in case of overload.

- Plug In Unit: 100A - 600A
- Tap-off unit: 800A - 1200A



FUSE is a device in which a circuit breaker is assembled by fuse link, holder carrier and base, which can manually or electrically open and close the electric circuit.

Use FUSE with LS Busway to easily maintain a current branch, even when the load is extended and shifted.



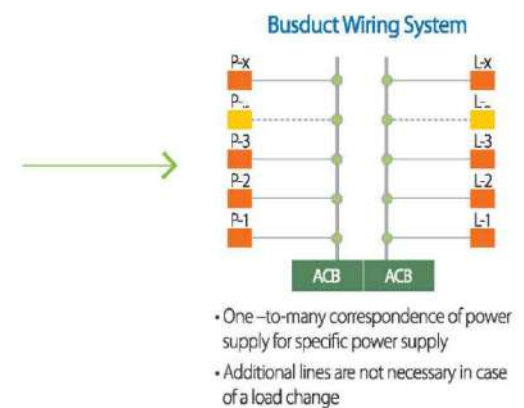
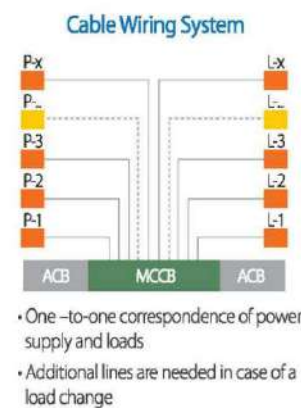
Benefits

- Compatible with multiple brands and across a variety of applications
- Offers added protection to wires while distributing loads
- Can automatically cut off electric power in case of overload and short circuit
- A variety of rated currents from small to large capacities (30AF~1200AF)

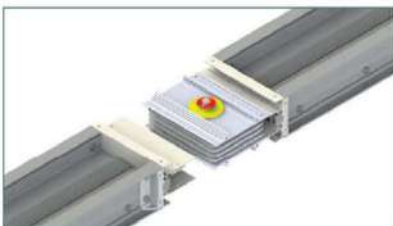
LS BUSWAY Advantage

Easy Distribution of Loads

LS Busway is separated from a single line at a plug box, which simplifies the power system. A MCCB or other fusible device can be installed at the plug box to effectively shut off fault current.



ACB : Air Circuit Breaker, MCCB : Molded Case Circuit Breaker

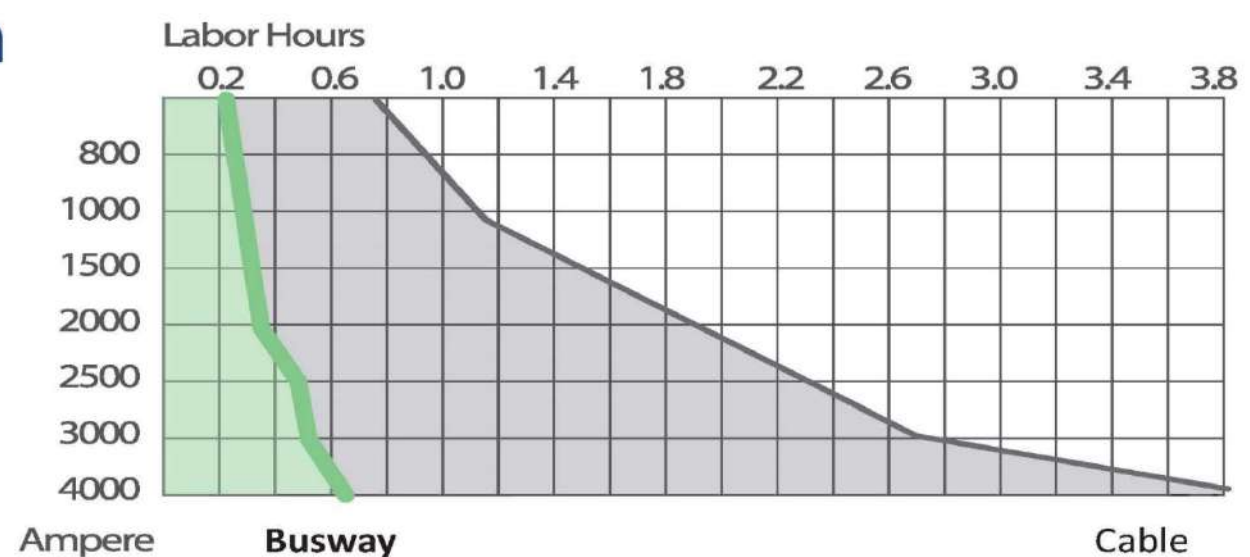


Easy Maintenance

The design of the LS Busway system makes it easy to detect abnormalities during installations, ensuring easy maintenance. When humidity or dust causes a malfunction in the system, the easy-to-maintain design allows replacing only the damaged parts.

Easy Installation

LS Busway is easy to install, using a simple method to connect, and improves cost due to its compact size. LS Busway also incorporates the "one joint bolt type" with a torque of only 1200kg.cm to further minimize time and costs.

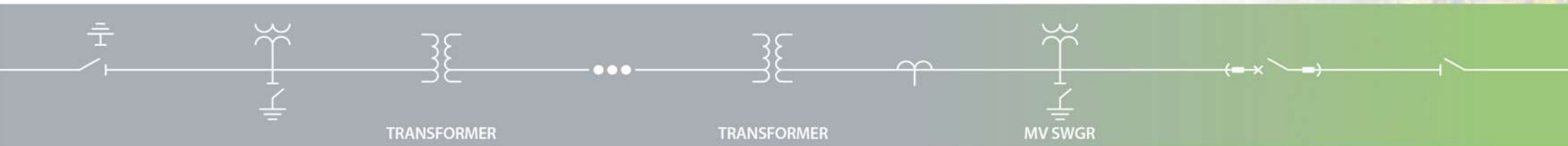


Easy Adaptability

LS Busway can be adapted to almost any application configuration. Various fittings, such as elbow, off-set and tee can be applied to various complex routes make Busway as versatile as traditional cable, able to transmit high-capacity currents without electrical and mechanical loss.

Power Solution / Drive Solution Products





Switchgear and Switchboard



Solution Power MV Metal Clad Switchgear

- **5/15kV** 1200 ~ 4000Amps 25/31.5/40/50kA
UL listed
- **27kV** 1200 ~ 2750Amps 25/31.5/40kA
UL listed
- **38kV** 1200/2000Amps 31.5/40kA
ANSI/IEEE
- **NEMA 1 / 3R** IEEE C37.20.2, IEEE C37.20.7,
ANSI C37.55



Susol LV Switchgear

- **600V** 800~3200Amps V-bus 85kA
UL 1558 listed
3200~5000/6000Amps V-Bus 100kA
UL 1558 listed
- **NEMA 1 / 3R** ANSI C37.51, ANSI C37.20.7



Susol LV Switchboard

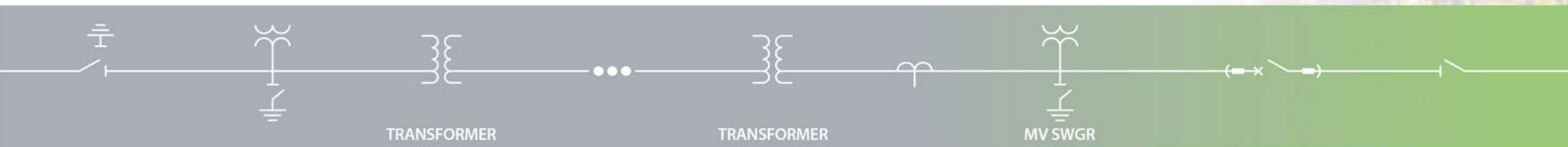
- **600V** 800~4000Amps Front Access up to 100kA
UL 891 listed
800~6000Amps Front & Rear up to 100kA
UL 891 listed
- **NEMA 1 / 3R** ANSI C37.13/16/17, ANSI C37.50



Susol Panelboard

- **480V** 100~600Amps Rail Type up to 100kA
UL 67 listed
800~1200Amps Bolt On Type up to 100kA
UL 67 listed
- **NEMA 1 / 3R** ANSI C37.13/16/17, ANSI C37.50

Power Solution **Systems**



Transformer



LS Cast Coil Transformer

- Up to 36kV / 25MVA Al/Cu F/H Class
- Low noise / High Efficiency
- IEEE C57.12.01
- UL Listed or CSA FE Certification

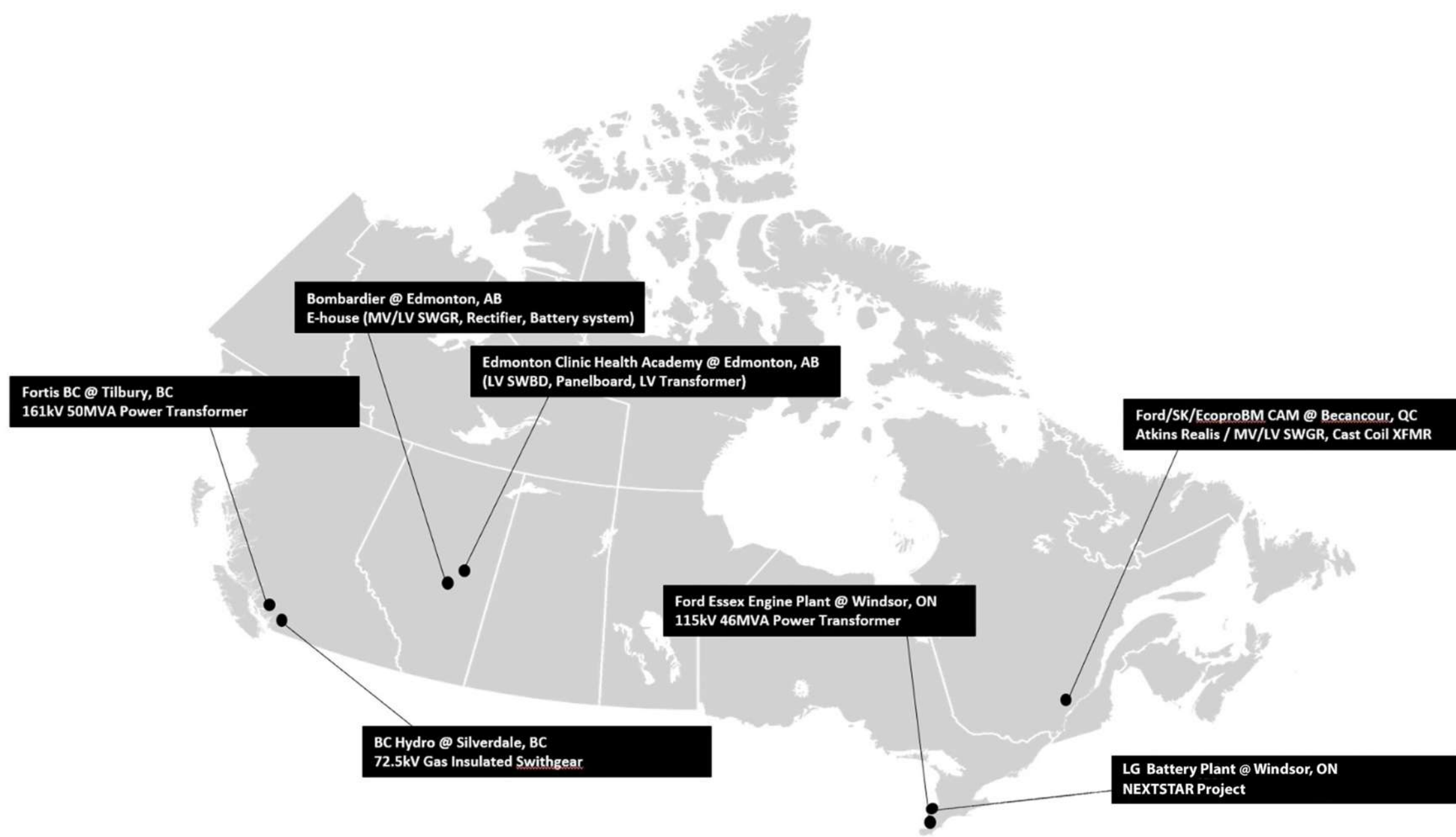
Unit Substation



Single / Double Ended Type Applicable

- Primary Fusible Switch or Circuit Breaker Section
 - + Transformer Section
 - + LV SWGR or LV SWBD Section

LS Canada Project Experience

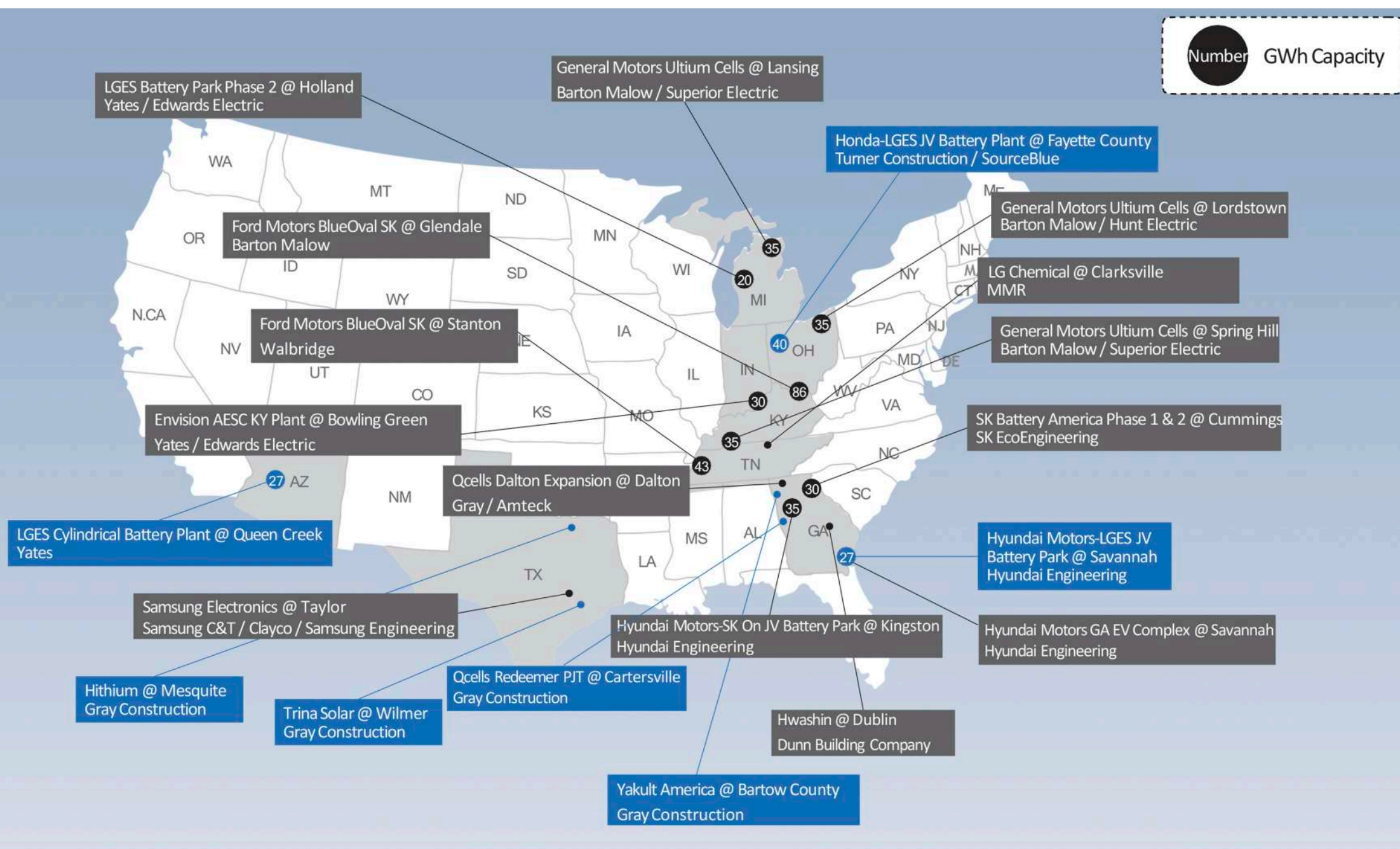


Country	Project Name	Site Location	Scope of Work
Canada	Fortis	Tilbury, BC	161KV 50MVA Power Transformer
Canada	Bombardier	Edmonton, AB	E-house [MV/LV SWGR, Rectifier, Battery System]
Canada	Edmonton Clinic Health Academy	Edmonton, AB	LV SWBD, Panelboard, LV Transformer
Canada	BC Hydro	Silverdale, BC	72.5KV Gas Insulated SWGR
Canada	Ford Essex Engine Plant	Windsor, ON	115KV 46MVA Power Transformer
Canada	Ford/SK/EcoproBM CAM	Becancour, QC	ML/LV SWGR, Cast Coil XFMR
Canada	LG Battery Plant	Windsor, ON	EX-Way Bus Duct

LS Cable & System US Project Experience



LS Electric US Project Experience





SAYA SYSTEM
TAVATAV



Unit 201, 315 Steelcase Rd E
Markham, ON

Postal code: L3R 2R5
Tel: (647) 800 6606

■ www.sayasystem.ca

■ Email: info@sayasystem.ca